

Scenarios



Community Support Program

Baltimore Community Support Program

Ross McNutt



CSP Exercise

Shooting Scenario 1

McDonalds Parking Lot

2501 Franklin Street

9/7/2016



Exercise

Calls for Service Report

Incident Report			
CFS#	162012654	TimeReceived	9/7/2016
Inv#		TimeArrived	1/1/0001 12:00:00 AM
Incident Type	4A AGG ASSAULT - C	Priority	1
Disposition		<input type="button" value="Make Track"/>	
Address	2501 Franklin Street McDonalds Parking Lot		
Remarks	Age unknown, Gender unknown, Consciousness unknown, Breathing status unknown. Caller Statement: shooting		
	9/7/2016		



Exercise

Calls for Service Report

Incident Report			
CFS#	162012649	TimeReceived	9/7/2016
Inv#	16G08095	TimeArrived	7/19/2016 7:40:58 PM
Incident Type	4A AGG. ASSLT.- GU	Priority	1
Disposition	X REPORT WRITTEN	<input type="button" value="Make Track"/>	
Address	2501 Franklin Street McDonalds Parking Lot		
Remarks	Shooting in McDonalds Parking Lot. White SUV seen leaving west after shooting someone.		

Exercise 1

Shooting Summary



- Two calls for service reported a shooting at 2501 Franklin McDonalds parking Lot at approximately xx:XX:00
- BCSP Analysts tracks cars leaving parking lot
- -----
- Starting Location Parking Lot North of Western District
 - 2 cars One large White SUV, 1 red car
- Gun Pick Up Location – Car 1 Shooter End of Mosher near Payson
- Car to Car Meeting location
- Cars travel similar paths to McDonalds passing several ground based cameras
- Car 2 arrives first and acts as a scout parking looking at lot
- Car 1 travels down Edmonson and returns
- Exercise Shooting McDonalds Parking Lot
- Car 1 and 2 leave quickly and travel north on Warrick
- Car 1 returns gun to location and hides simulated gun
- Car 1 and 2 travel routes past ground cameras meet back at starting location
- End of Exercise 1



Car 1 Plan

- Meet at Starting Location
 - Parking Lot North of Western District on Riggs and Mount
- Proceed to gun Pick Up Location
 - End of Mosher and Payson Street
- Go to Car to Car meeting Location Empty Parking Lot at Mosher and Payson
- Drive West on Lafayette and South on Bendonau then west on Edmonson. Drive out a ways.
- Make U Turn and Return on Rt 40
- Pull into McDonalds Parking Lot
- Exercise Shooting - Speed Off
- Return to replace gun
 - Turn North on Warrick West on Edmonson, east on Lafayette, north on Payson
- Return to starting location – Riggs an Mount Street Parking
 - North on Monroe East on pressman, south on Gilmour west on Riggs



Car 2 Plan

- Meet at Starting Location
 - Parking Lot North of Western District on Riggs and Mount
- Go to Car to Car meeting Location Empty Parking Lot at Mosher and Payson
- Drive West on Lafayette and South on Bentolau then west on Edmonson..
- Turn south on Evergreen Braddish Road turn left onto Return on Rt 40
- Pull into McDonalds Parking Lot
- Park on west side of lot backing in.
- Wait till white SUV arrives and Follow out from Exercise Shooting
- Go to North Ave
 - Turn North on Warrick West on Edmonson, North on Bentalou to North Ave
 - Travel east on North Ave to Monroe turn south on Monroe and
- Return to starting location – Riggs an Mount Street Parking
 - North on Monroe East on pressman, south on Gilmour west on Riggs

End of Shooting Exercise1

CSP Investigation Report



Shooting Scnario 2

Funeral Home

Mount Street

9/7/2016



Scenario 2

Shooting at Funeral Home

- Shooting at Funeral Home on Mount Street
- 2 Coordinated Cars – Spotter and Shooter
- Car 1 travels from start to retrieve gun at same location
- Travels to Funeral Home
- Flees east raps around, returns gun and returns via Pennsylvania and North to starting Location
-
- Car 2 takes separate route to funeral home
- Follows car 1 out takes slightly separate route travels in parallel with car 1 past ground cameras.



Scenario 2

Calls for Service Report

Incident Report

CFS#	162012654	TimeReceived	9/7/2016
Inv#		TimeArrived	1/1/0001 12:00:00 AM
Incident Type	4A AGG ASSAULT - C	Priority	1
Disposition		<input type="button" value="Make Track"/>	
Address	Funeral Home on Harlem and Mount Street		
Remarks	Age unknown, Gender unknown, Consciousness unknown, Breathing status unknown. Caller Statement: shooting		
	9/7/2016		



Scenario 2

Calls for Service Report

Incident Report

CFS#	162012649	TimeReceived	9/7/2016
Inv#	16G08095	TimeArrived	7/19/2016 7:40:58 PM
Incident Type	4A AGG. ASSLT.- GU	Priority	1
Disposition	X REPORT WRITTEN	<input type="button" value="Make Track"/>	
Address	2501 Franklin Street McDonalds Parking Lot		
Remarks	Shooting in Funeral Home Parking Lot. White SUV seen leaving North after shooting someone.		

Scenario 2 Car 2



Car 2 Starts at parking lot on Rigg

Takes route to Funeral Home passing cameras

Gets in place at Funeral Home prior to car 1

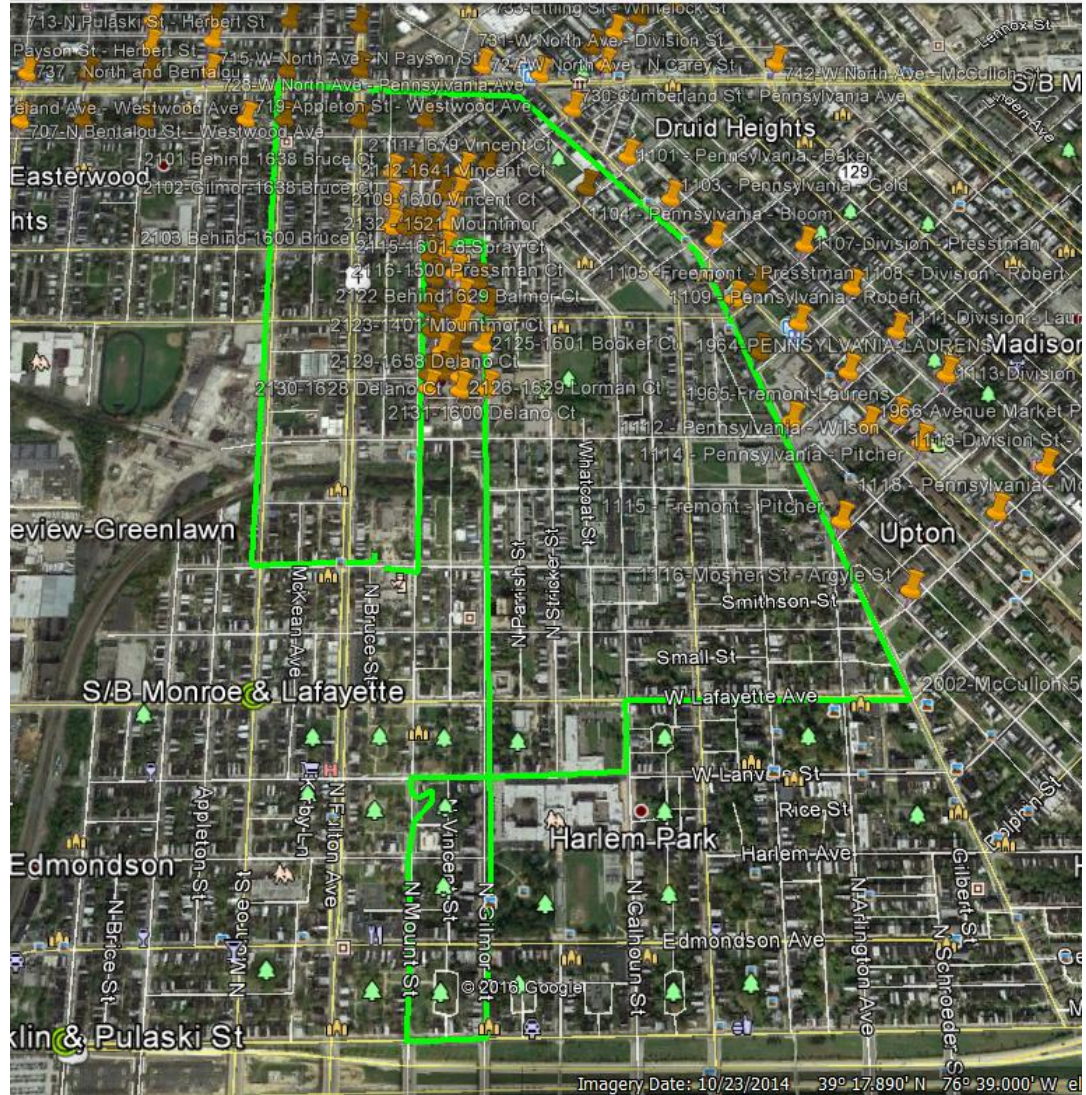
Exercise Shooting

Follows car 1 out and takes slightly different route

Up Fremont and Penn
West on North

Travels are pair with Car 1

South on Monroe return to starting locations



CSP Investigation Report



Shooting Scenario 3

3100 W North Ave
9/7/2016



Scenario 3

3100 North Street Shooting

- Shooting at 3100 North Street to match several previous crimes
- Cars start at starting location on Riggs
- Car 1 travels to gun pick up location (same)
- Travel to North Street Location
- Drives around block twice
- Stops for 20 seconds and simulates a drive by shooting Speeds off
- Return gun to hiding location
- Returns to starting location
- Car 2 serves as a look out / spotter
- Car 2 meets with Car 1 at car to car meeting prior to shooting
Leaves quickly after shooting returns to starting location



Scenario 3

Calls for Service Report

Incident Report

CFS#	162012654	TimeReceived	9/7/2016
Inv#		TimeArrived	1/1/0001 12:00:00 AM
Incident Type	4A AGG ASSAULT - C	Priority	1
Disposition		<input type="button" value="Make Track"/>	
Address	3117 W NORTH AVE		
Remarks	Age unknown, Gender unknown, Consciousness unknown, Breathing status unknown. Caller Statement: shooting		



Scenario 3

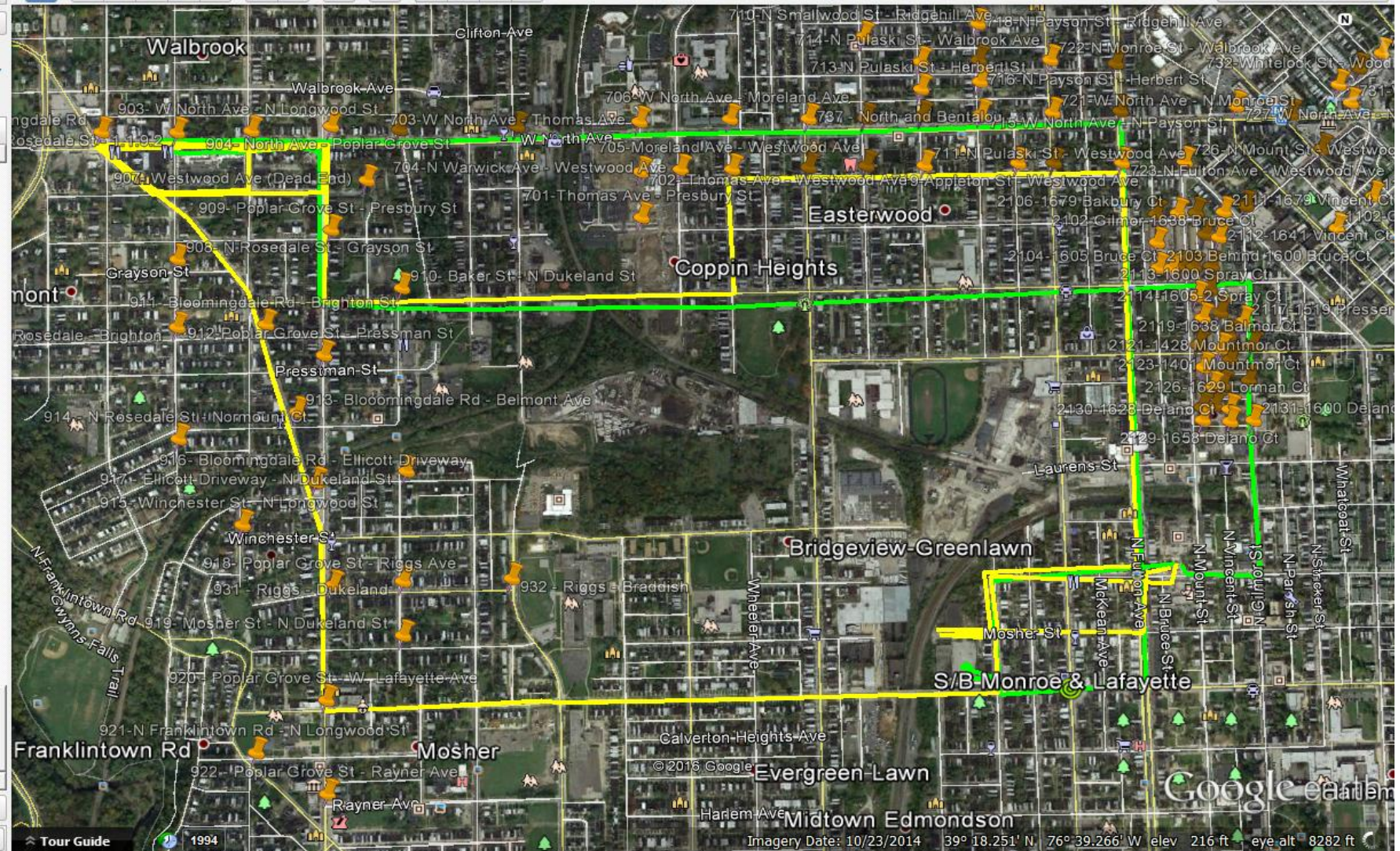
Calls for Service Report

Incident Report			
CFS#	162012649	TimeReceived	9/7/2016
Inv#	16G08095	TimeArrived	7/19/2016 7:40:58 PM
Incident Type	4A AGG. ASSLT.- GU	Priority	1
Disposition	X REPORT WRITTEN	<input type="button" value="Make Track"/>	
Address	3100 W NORTH AVE		
Remarks	SHOOTING IN FRONT OF E20 QRTS White SUV seen leaving scene headed East on North Ave		



Scenario 3

Shooting on North Ave





Car 1 Shooter

Car 1 starts at lot on Riggs

Goes retrieves gun from end of Mosher again

Meets car 2 in Lot

Travels west on Lafayette and North on Poplar Grove

Circles North Ave Location 1 or twice

Pauses in Street then Speeds off Travels back to gun drop location

Travels back to starting Location

